

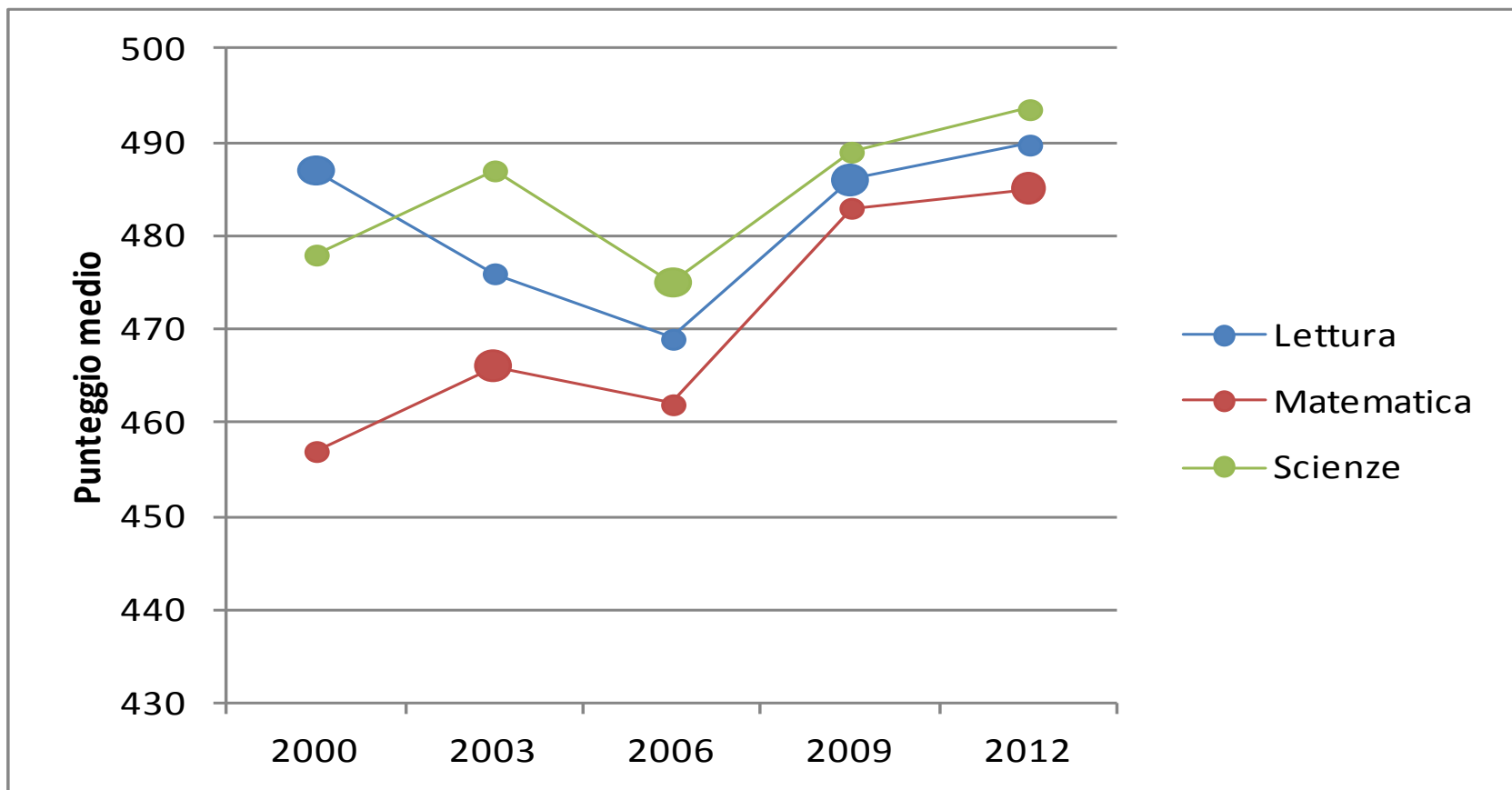


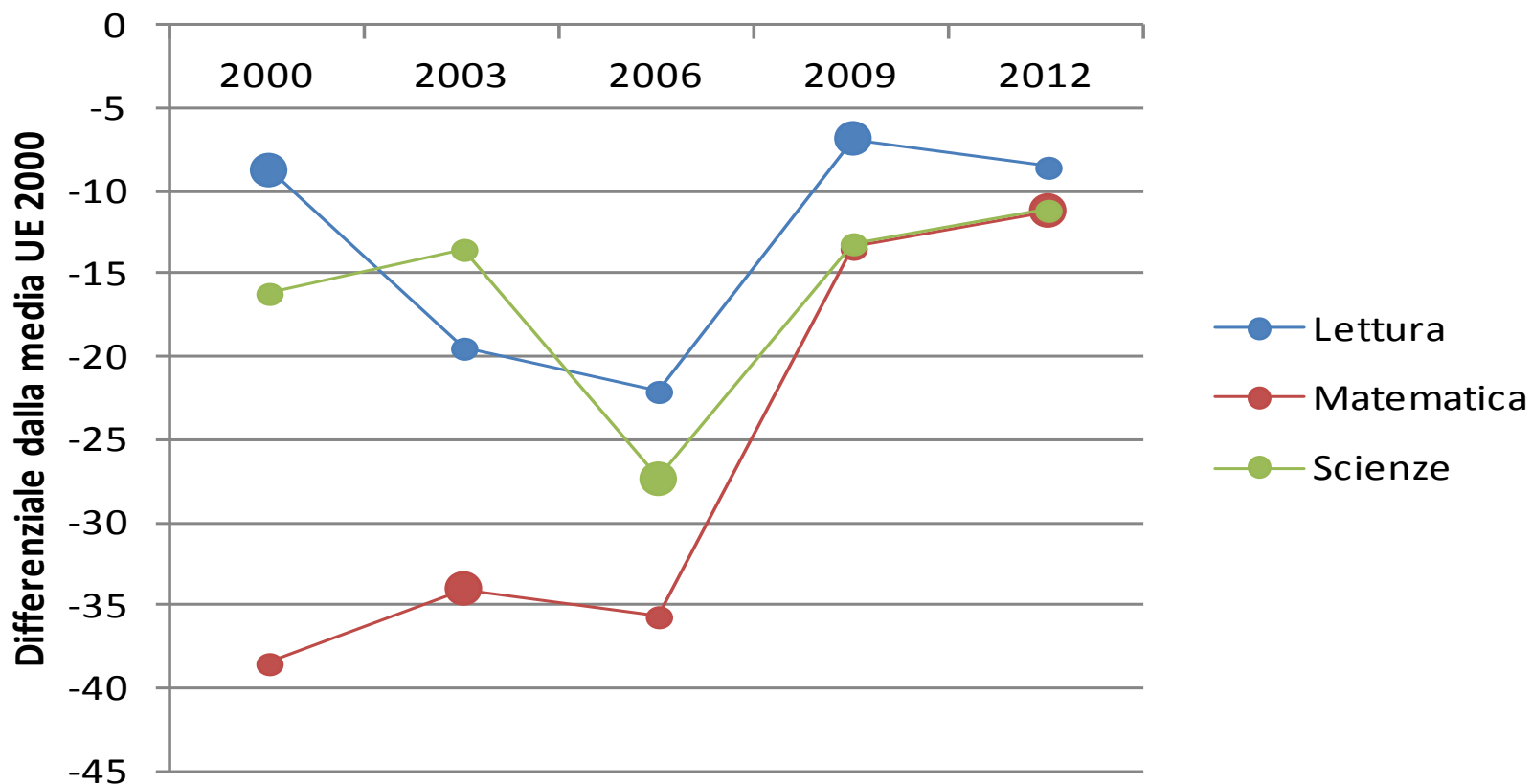
L'andamento italiano nei cicli PISA

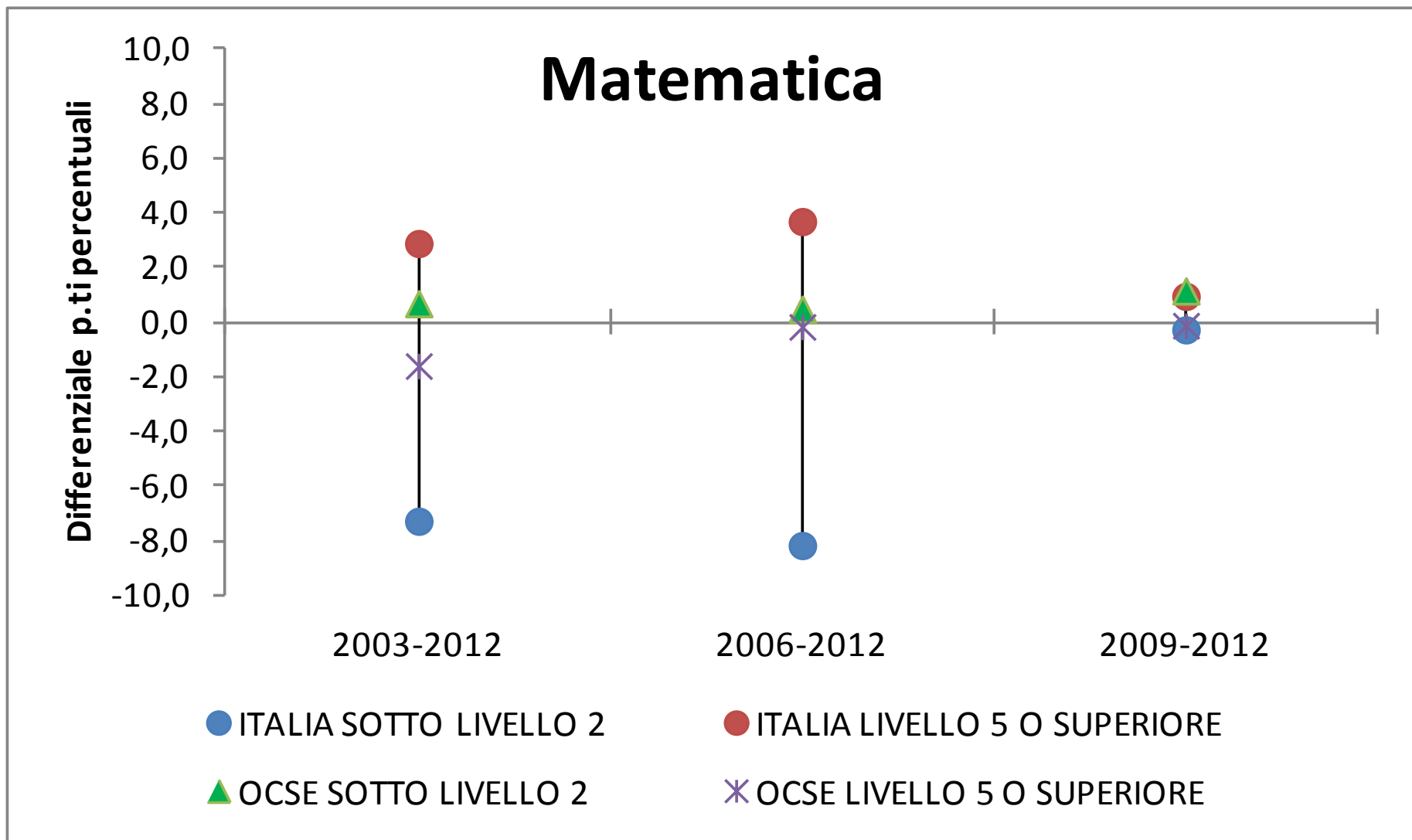
Analisi dei trend

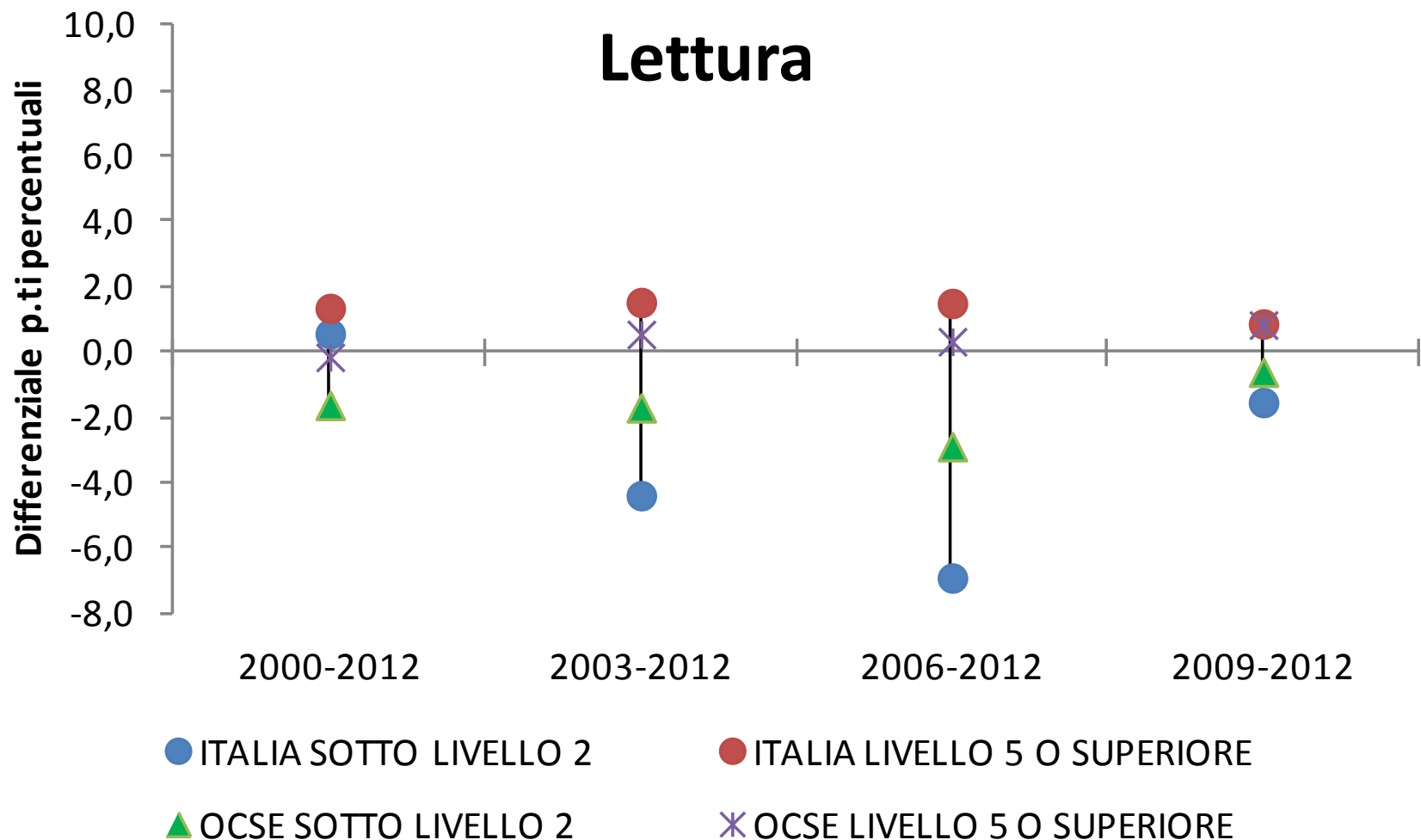


- Dinamica dei risultati italiani nei diversi cicli PISA in termini comparativi
- Analisi delle dinamiche all'interno del contesto nazionale
- Analisi multivariata sul periodo 2006 – 2012
 - Differenze tra aree territoriali e tipo di scuola
 - Effetti di composizione

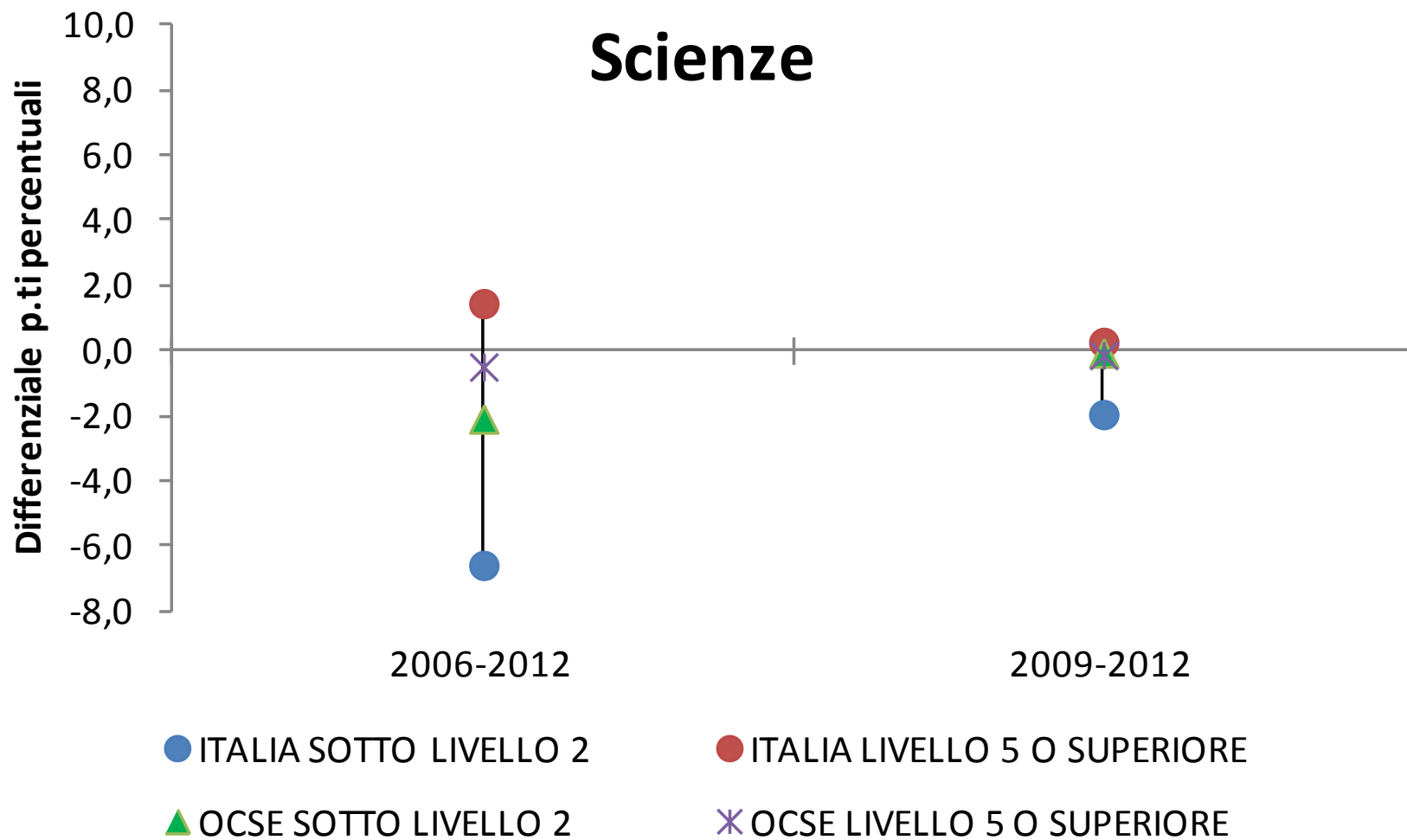


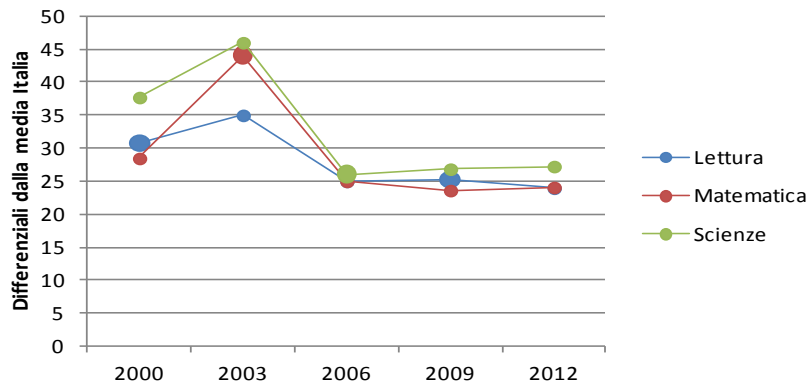
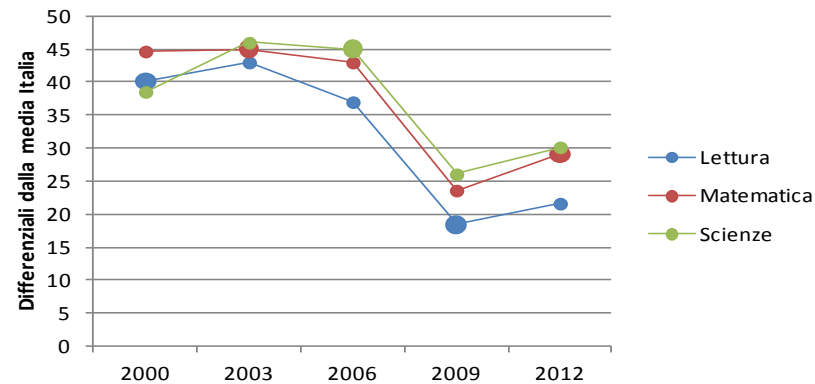
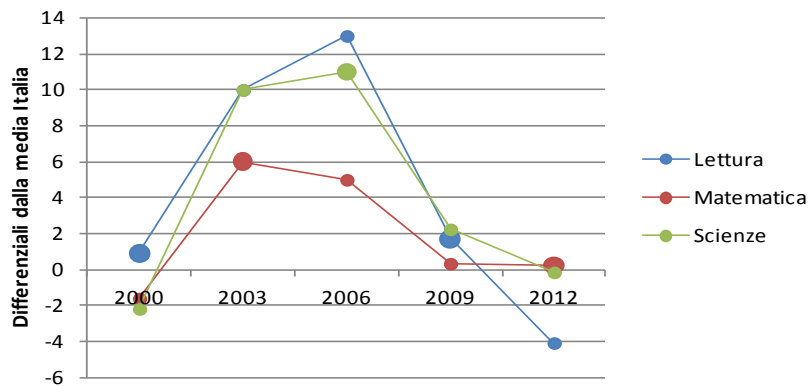
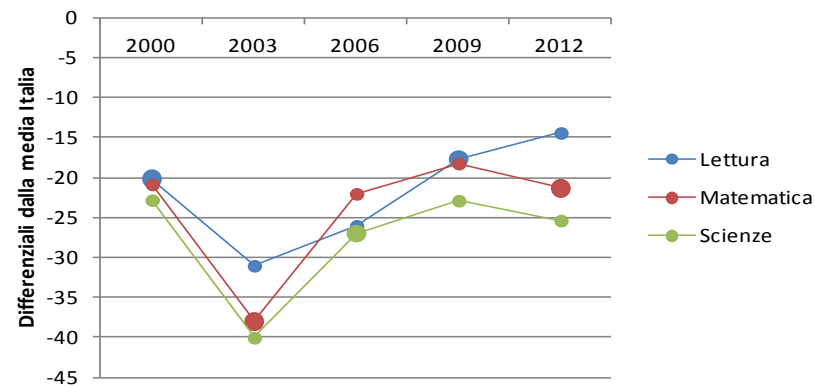
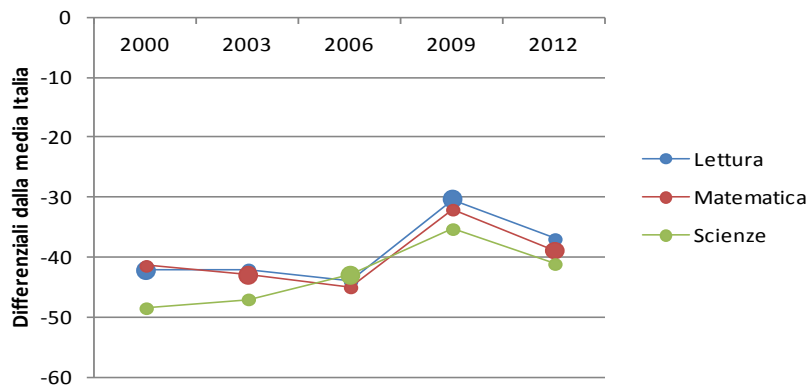




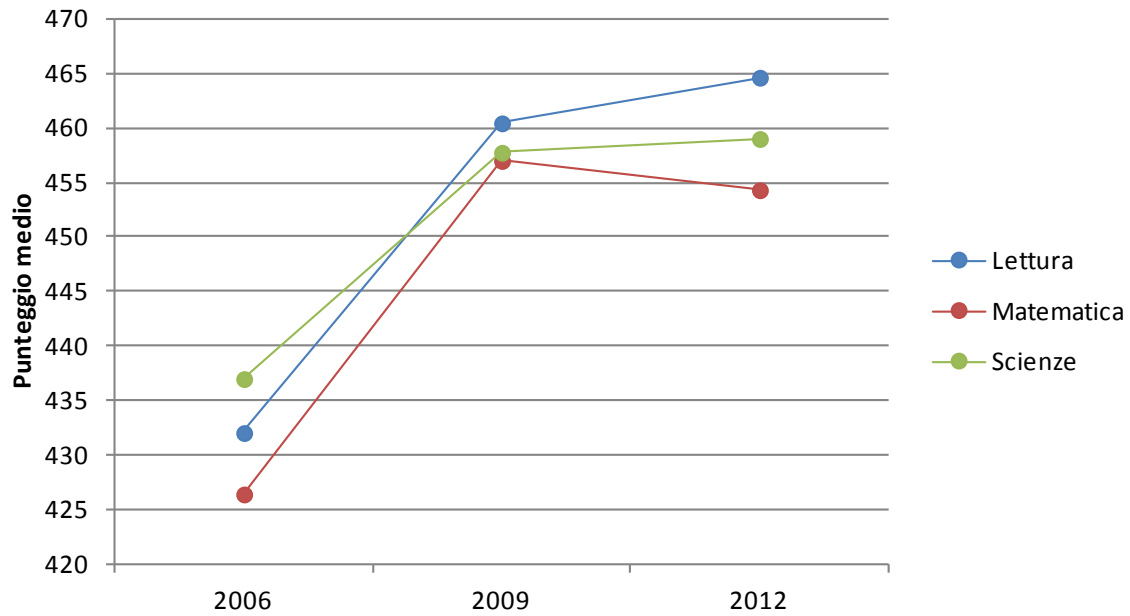


Scienze

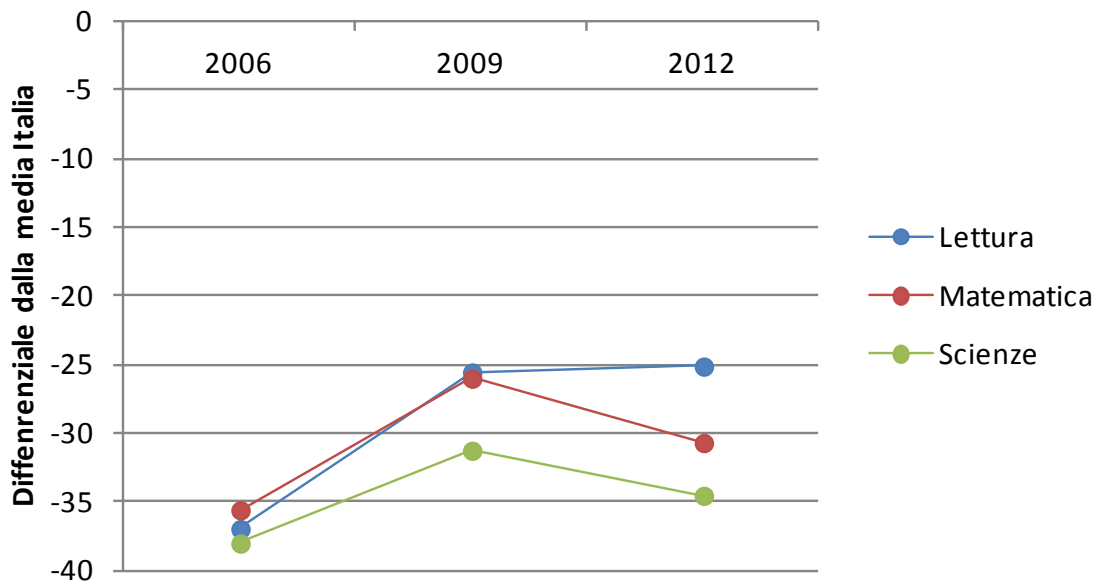


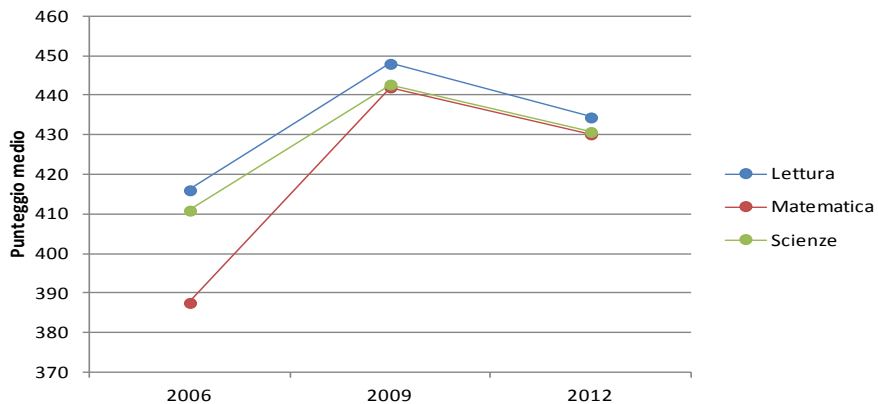
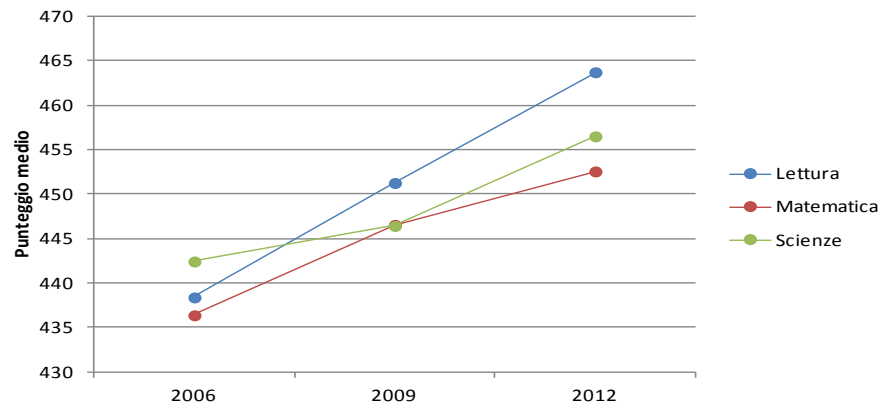
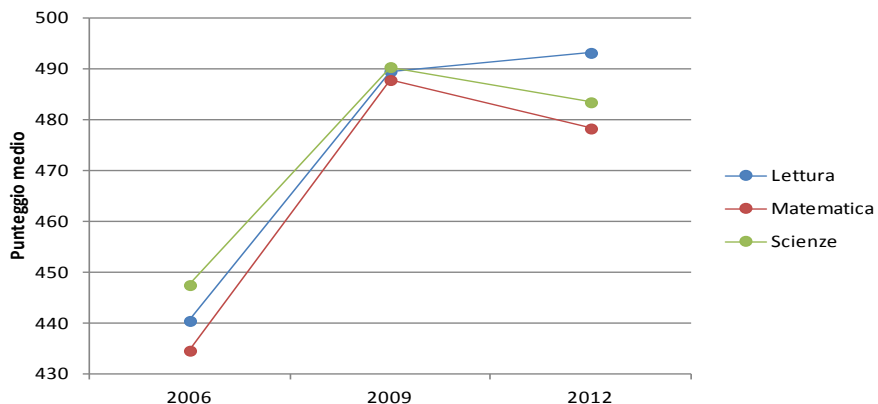
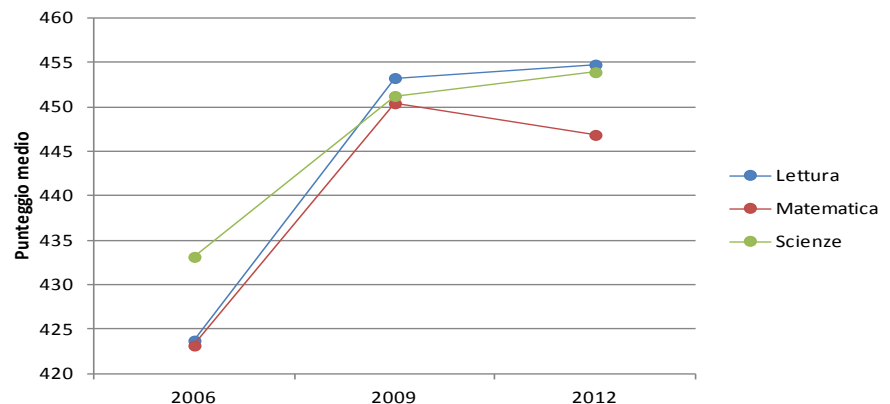
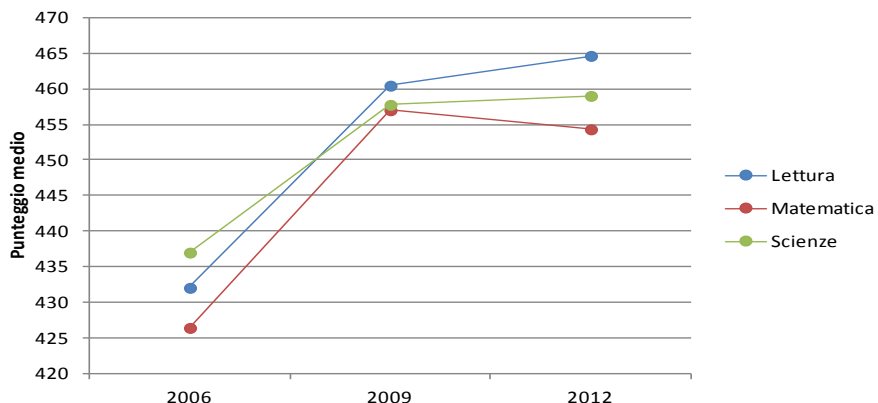
Nord Ovest**Nord Est****Centro****Sud****Sud Isole**

Area PON

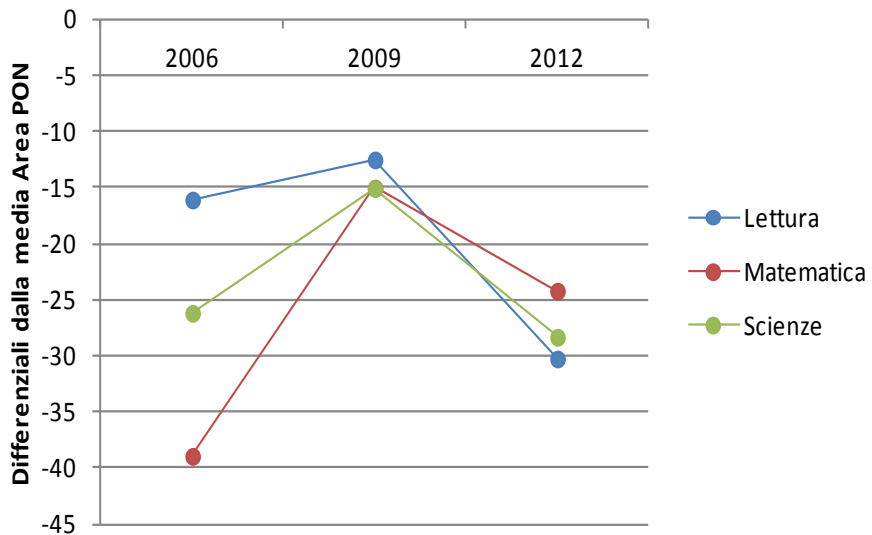


Area PON

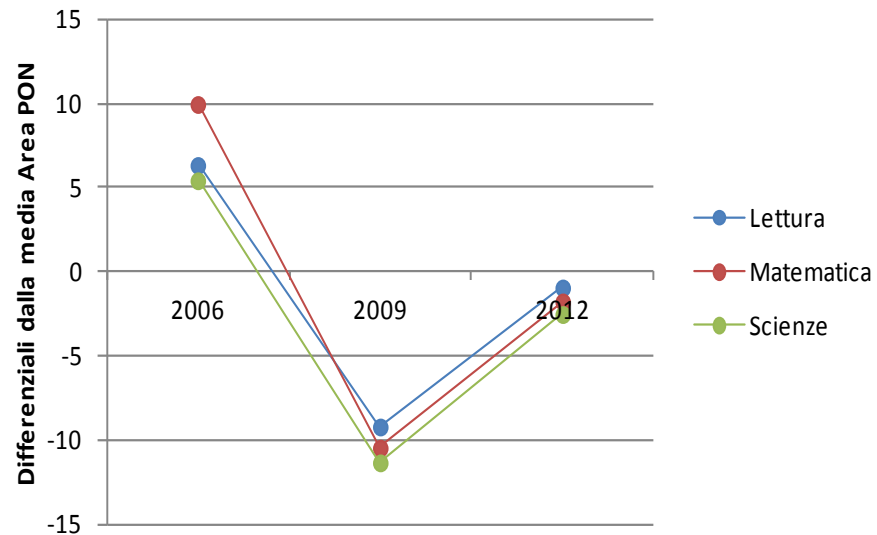


Calabria**Campania****Puglia****Sicilia****Area PON**

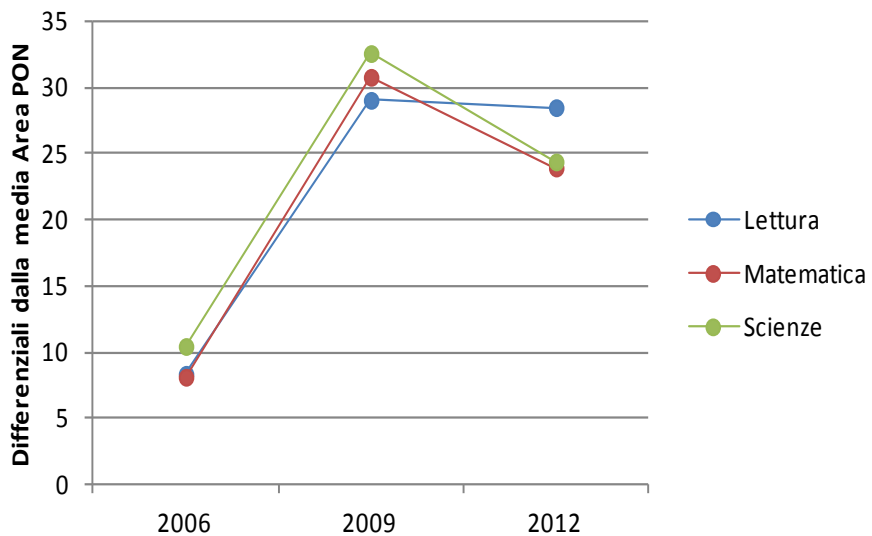
Calabria



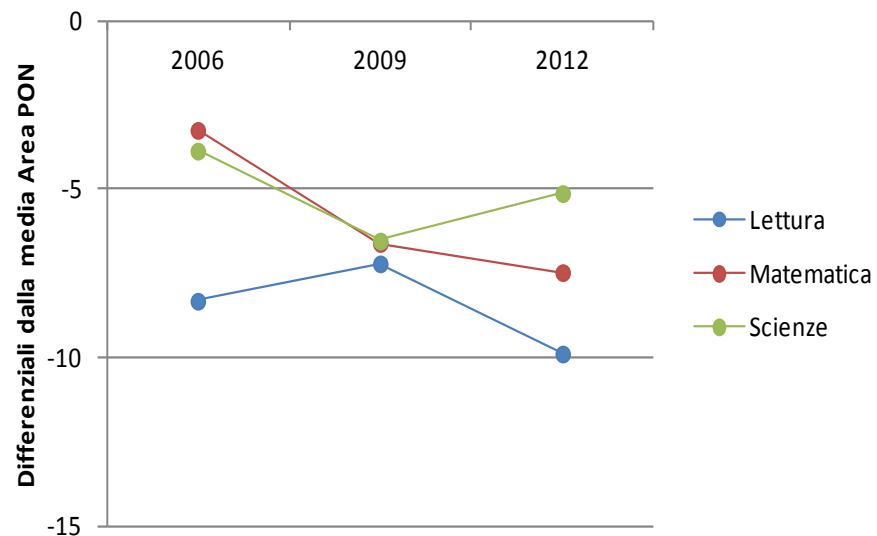
Campania



Puglia



Sicilia



	Lettura			Matematica			Scienze		
	2006	2009	2012	2006	2009	2012	2006	2009	2012
Intercetta	561,48 (4,63)	578,35 (4,05)	561,52 (4,11)	509,20 (4,53)	535,71 (5,26)	524,12 (4,92)	536,37 (4,10)	556,47 (4,22)	542,38 (4,86)
Istituti tecnici	-38,17 (5,91)	-37,61 (3,75)	-26,03 (4,08)	-16,84 (5,52)	-23,77 (4,87)	-16,53 (4,20)	-27,52 (5,04)	-28,97 (4,28)	-15,83 (4,18)
Istituti prof.	-98,35 (9,08)	-82,61 (5,60)	-64,97 (6,35)	-60,33 (8,10)	-70,69 (6,63)	-60,14 (6,01)	-70,52 (6,69)	-72,17 (6,59)	-54,66 (6,19)
Scuole sec. I grado	-130,04 (12,56)	-144,24 (19,12)	-106,77 (11,00)	-98,57 (14,90)	-149,95 (26,03)	-98,68 (11,04)	-125,56 (18,26)	-140,72 (22,18)	-89,60 (11,75)
Formaz. Prof.	-121,19 (17,43)	-108,77 (7,09)	-69,55 (10,38)	-82,05 (15,73)	-87,95 (9,20)	-68,16 (9,41)	-100,67 (11,77)	-98,18 (7,72)	-62,39 (10,15)
I° Sec. Sup	-42,47 (3,97)	-45,55 (2,28)	-40,28 (2,71)	-44,15 (2,63)	-49,61 (2,46)	-41,06 (2,55)	-40,96 (2,99)	-46,59 (2,27)	-38,17 (2,55)
III° Sec. Sup	20,03 (7,68)	13,94 (4,61)	20,77 (5,61)	23,00 (6,72)	18,24 (5,12)	20,69 (4,45)	20,48 (5,25)	10,78 (5,06)	16,21 (4,49)
Nord Est	8,76 (4,22)	-5,07 (3,18)	4,03 (4,41)	13,31 (4,07)	2,66 (3,95)	9,91 (5,00)	14,50 (3,62)	1,67 (3,77)	7,64 (4,37)
Centro	-22,92 (8,79)	-36,88 (3,71)	-32,42 (4,33)	-30,98 (6,69)	-35,25 (4,31)	-30,80 (4,80)	-26,74 (7,40)	-37,42 (3,96)	-33,43 (4,06)
Sud	-61,51 (4,63)	-50,90 (4,44)	-39,25 (5,56)	-52,44 (5,38)	-50,66 (5,17)	-45,77 (5,77)	-61,25 (3,86)	-58,39 (5,13)	-52,53 (5,25)
Sud e Isole	-72,54 (7,35)	-63,76 (4,84)	-60,22 (4,10)	-65,98 (6,43)	-61,54 (5,13)	-62,89 (4,74)	-68,39 (5,55)	-69,18 (4,56)	-68,06 (4,57)
Uomo	-25,09 (2,91)	-26,64 (1,84)	-22,52 (1,64)	28,39 (2,30)	30,53 (1,85)	32,33 (1,63)	16,85 (2,40)	14,87 (1,95)	16,28 (1,66)
Immigrato 2 ^a gen.	-7,56 (17,76)	-25,14 (7,36)	-26,40 (5,33)	-34,64 (13,12)	-23,94 (6,57)	-19,29 (4,82)	-47,24 (12,63)	-29,36 (8,10)	-20,02 (4,96)
Immigrato 1 ^a gen.	-38,15 (8,36)	-27,14 (4,40)	-33,68 (3,59)	-17,23 (5,96)	-16,76 (5,28)	-19,95 (3,37)	-32,90 (6,11)	-34,48 (3,93)	-28,67 (3,04)
ESCS	2,26 (1,22)	5,11 (0,72)	2,74 (0,66)	2,89 (0,92)	3,39 (0,79)	3,46 (0,66)	4,68 (0,97)	5,79 (0,94)	2,95 (0,74)
ESCS Scuola	21,82 (7,00)	22,74 (4,38)	43,44 (5,28)	33,18 (5,99)	18,64 (5,65)	41,25 (5,02)	25,52 (6,46)	20,31 (5,32)	42,98 (5,14)

-120 -100 -80 -60 -40 -20 0 20 40 60

Licei

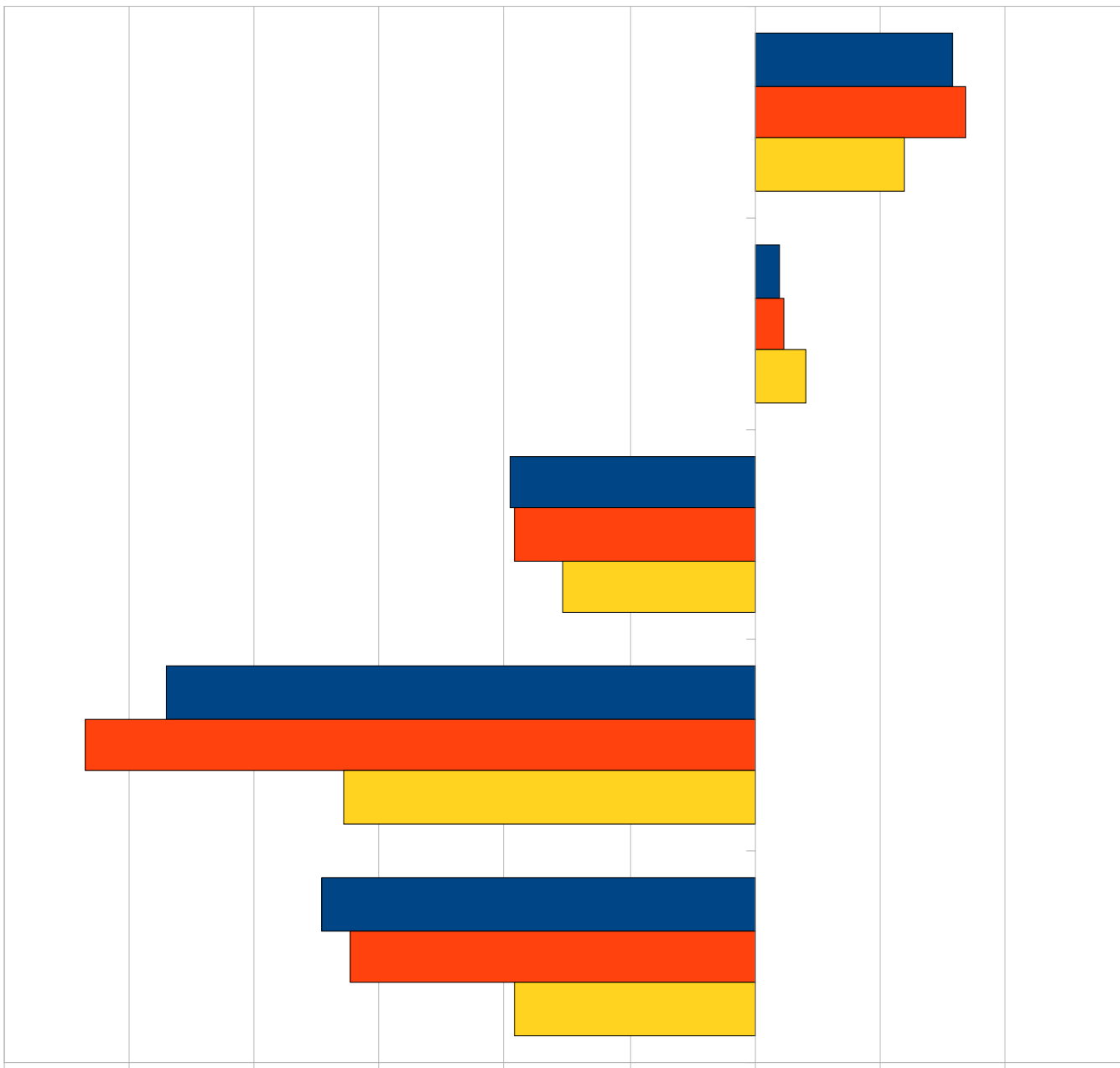
Istituti tecnici

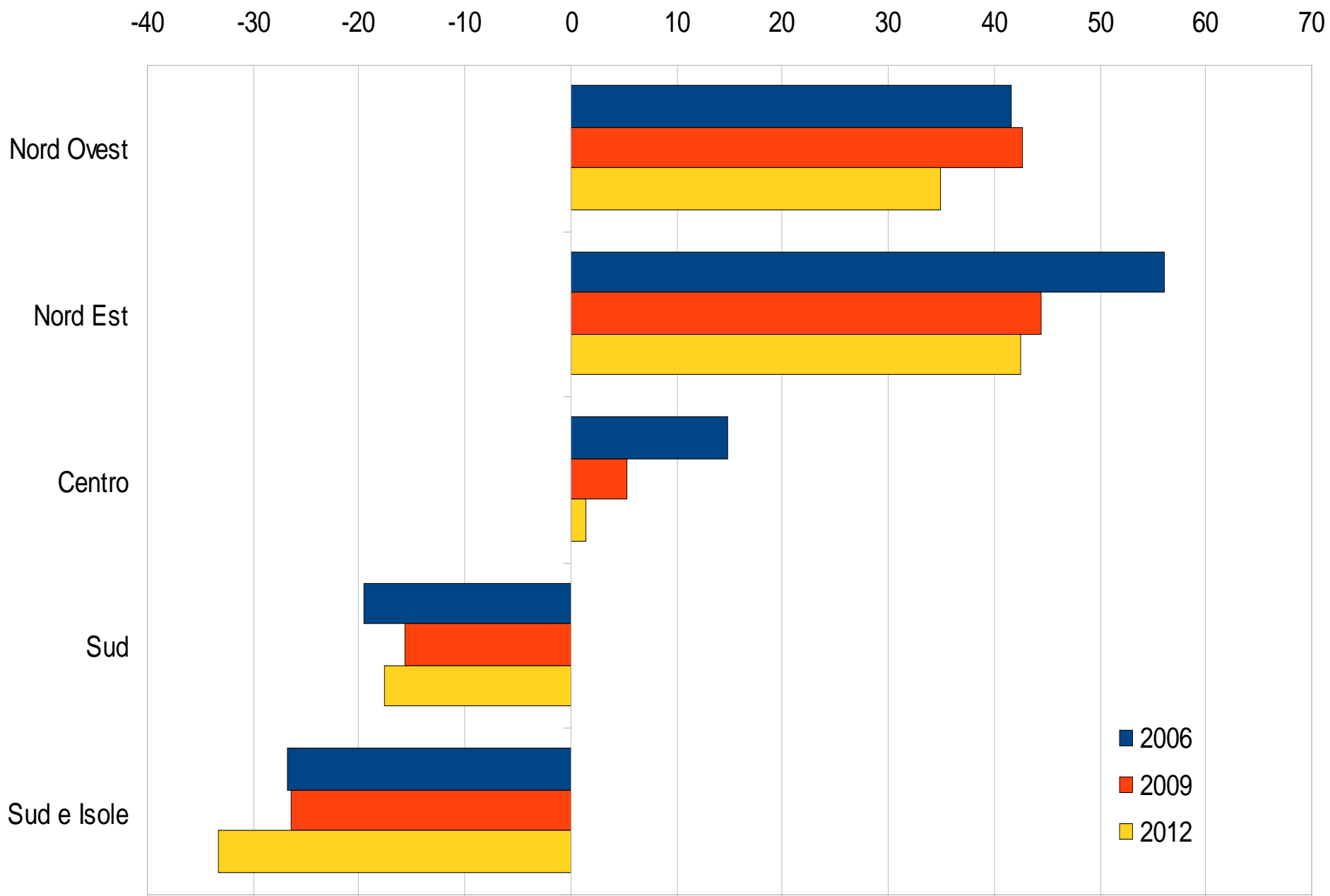
Istituti prof.

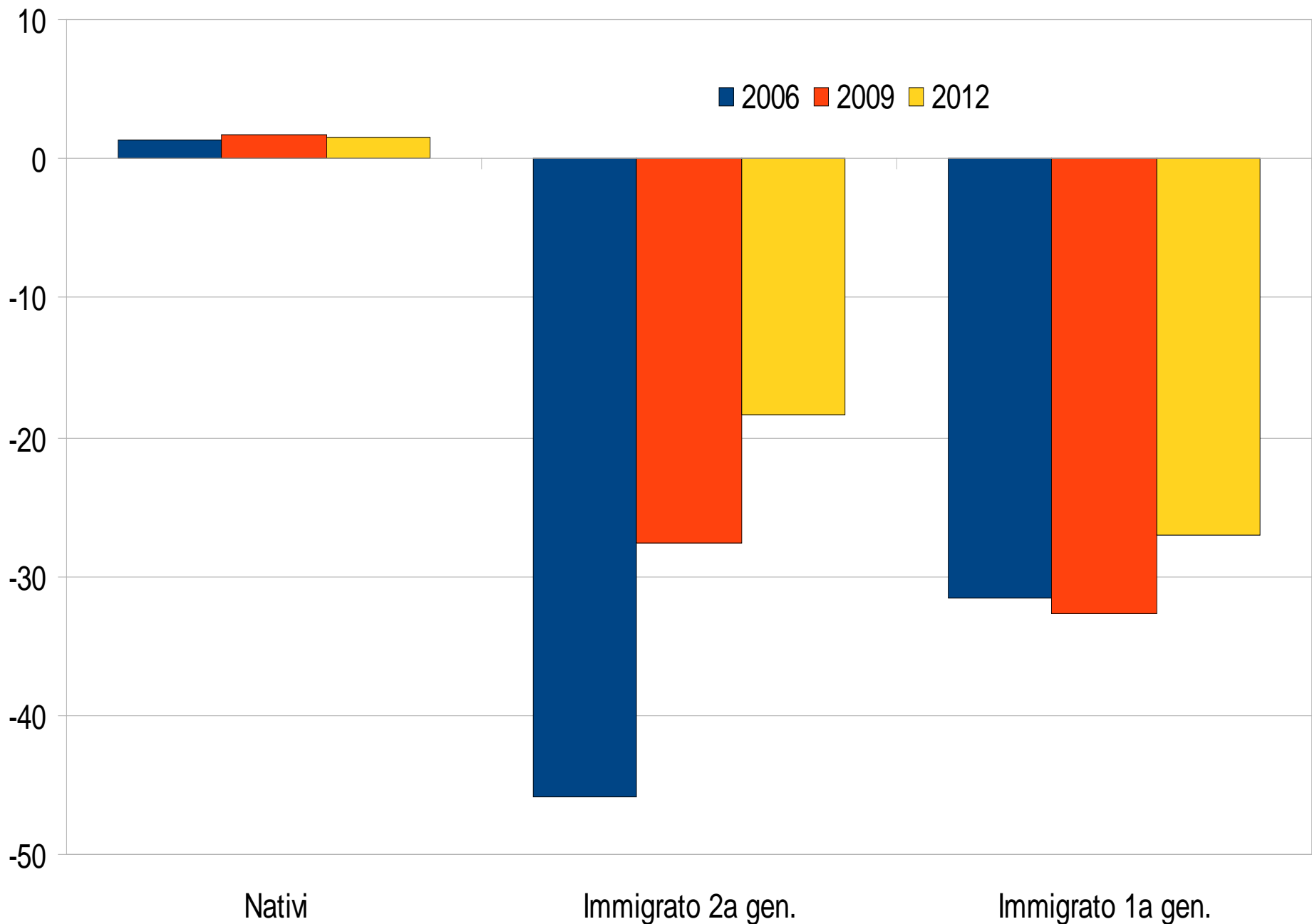
Scuole sec. I grado

Formaz. Prof.

■ 2006
■ 2009
■ 2012



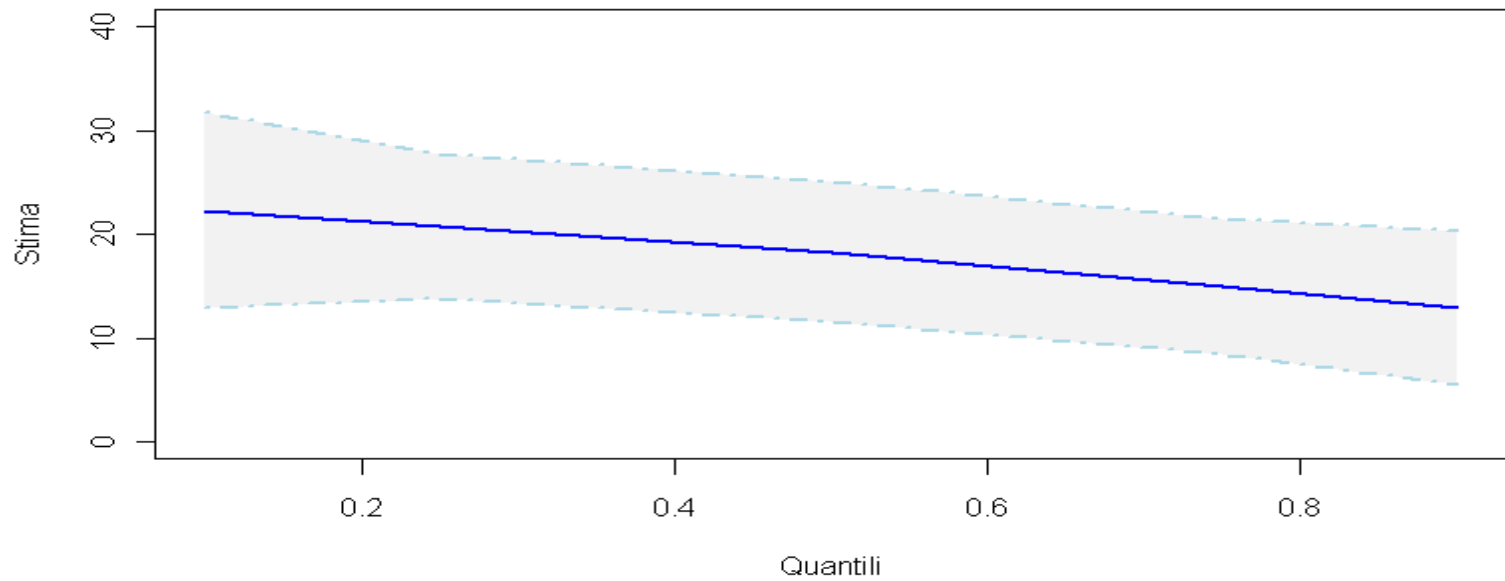




	Stima	Err. Stand.
Intercetta	523,9	2,8
Istituti Tecnici	-25,6	2,4
Istituti Professionali	-70,3	3,7
Scuole Sec. I grado	-118,9	9,3
Formazione Professionale	-86,1	6,2
Primo Sec. Superiore	-43,4	1,5
Terzo Sec. Superiore	18,2	2,6
Nord Est	5,9	2,1
Centro	-32,0	2,9
Sud	-52,7	2,6
Sud-Isole	-65,6	2,6
ESCS	3,7	0,4
ESCS Medio Scuola	29,9	3,1
2009	18,1	2,3
2012	16,9	2,3
Materia Spec. Anno	1,3	0,6
Matematica e Maschio	23,7	0,9
Scienze e Maschio	25,4	0,9
Lettura e Femmina	26,5	1,5
Matematica e Femmina	-8,2	1,5
Scienze e Femmina	8,7	1,6
Immigrato di seconda generazione	-25,4	4,2
Immigrato di prima generazione	-28,0	2,5

VARIABILI	Q10		Q25		Q50		Q75		Q90	
	Value	Std. Error	Value	Std. Error	Value	Std. Error	Value	Std. Error	Value	Std. Error
Intercetta	421,73	6,98	474,22	4,38	527,56	3,95	578,85	3,93	621,72	6,57
ISTITUTI TECNICI	-23,67	6,71	-25,40	5,86	-25,04	5,53	-26,10	5,94	-27,20	7,85
ISTITUTI PROFESSIONALI	-70,91	10,19	-70,57	7,11	-69,06	7,25	-69,24	7,77	-70,23	11,21
SCUOLE SEC. I GRADO	-140,54	38,63	-128,31	26,27	-117,78	27,31	-109,75	27,18	-100,90	37,34
FORMAZIONE PROFESSIONALE	-92,61	13,91	-90,44	9,83	-84,59	9,83	-81,66	13,50	-78,73	13,13
Primo Sec. Sup.	-45,39	3,29	-45,21	2,13	-44,42	2,18	-43,07	3,36	-39,85	4,19
Terzo Sec. Sup.	18,95	7,22	17,61	4,92	17,07	3,90	17,85	4,84	17,80	4,82
NORD EST	5,25	4,43	5,62	3,74	5,93	3,01	5,71	3,23	5,59	4,16
CENTRO	-35,06	7,41	-33,20	6,07	-32,40	5,40	-30,55	4,70	-29,68	6,94
SUD	-57,87	6,00	-56,35	4,27	-53,78	4,48	-50,62	5,20	-46,61	5,93
SUD-ISOLE	-70,04	7,13	-68,33	3,69	-66,07	4,38	-62,98	4,27	-60,00	4,79
ESCS	2,56	1,29	3,00	0,82	3,40	0,78	4,42	0,79	5,51	1,01
ESCS MEDIO SCUOLA	30,52	7,45	30,85	5,67	32,28	6,57	30,22	6,12	26,01	9,77
2009	22,28	5,72	20,75	4,26	18,29	4,09	14,97	3,96	12,92	4,48
2012	21,93	4,34	19,69	3,97	16,95	3,29	13,33	3,96	10,87	4,93
MATERIA SPEC. ANNO	5,88	1,95	2,54	1,20	0,61	1,08	-0,74	1,26	-2,30	1,58
MATEMATICA E MASCHIO	30,99	2,39	25,48	2,01	20,96	1,68	19,26	1,81	20,90	2,37
SCIENZE E MASCHIO	29,55	2,55	26,34	1,95	23,84	1,57	22,81	1,55	24,10	2,48
LETTURA E FEMMINA	36,57	2,90	30,13	2,60	24,80	2,28	20,96	2,17	18,62	2,56
MATEMATICA E FEMMINA	1,89	3,57	-6,35	2,69	-11,96	2,75	-14,55	2,15	-13,14	2,95
SCIENZE E FEMMINA	18,85	3,00	10,68	2,61	5,63	2,39	3,03	2,16	3,45	3,08
IMM. II GEN.	-36,81	9,09	-29,93	8,71	-24,61	7,65	-20,16	7,10	-17,87	7,59
IMM. I GEN.	-32,70	6,66	-29,03	4,87	-27,02	3,44	-25,49	3,76	-25,02	5,41

2009



2012

